



Quarterly Bulletin of the Calaveras County Historical Society
Volume XVII January, 1969 Number 2

A CALAVERAS ALBUM

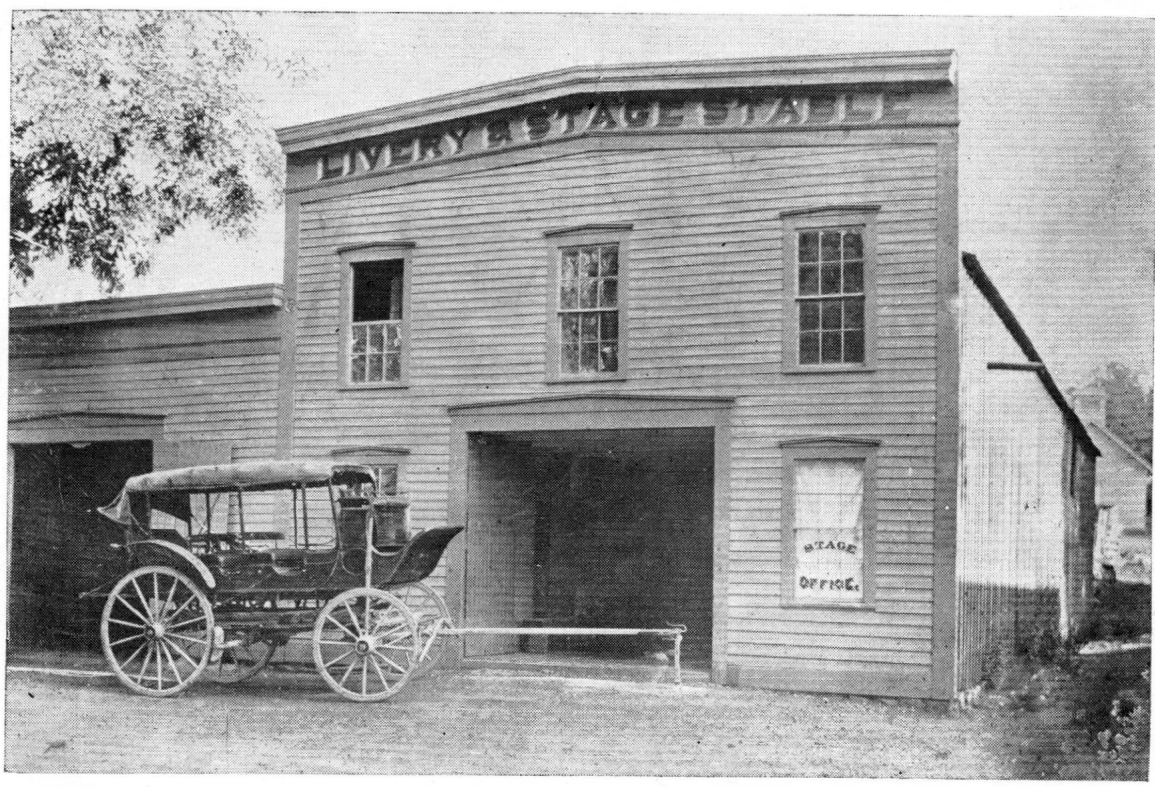
Here is a selection of illustrations that appeared in the earlier issues of **Las Calaveras**—all of them more than ten years ago. We believe that our newer members will enjoy seeing them.

The two Matteson photographs were first printed in **The Diary of Thomas Jefferson Matteson**, published by the Society in April, 1954.

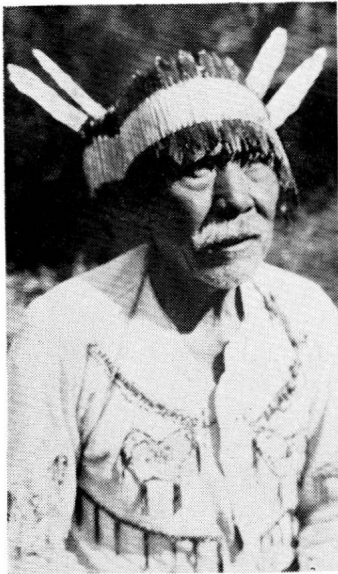
Our recent policy of including more pictures, larger in size, has met with much favor from our readers. We will welcome the gift or loan of photographs, with pertinent dates, names and other information, for our future issues.



JAMES ALEXANDER SMITH
The late Judge Smith was President of the Society for its first twelve years



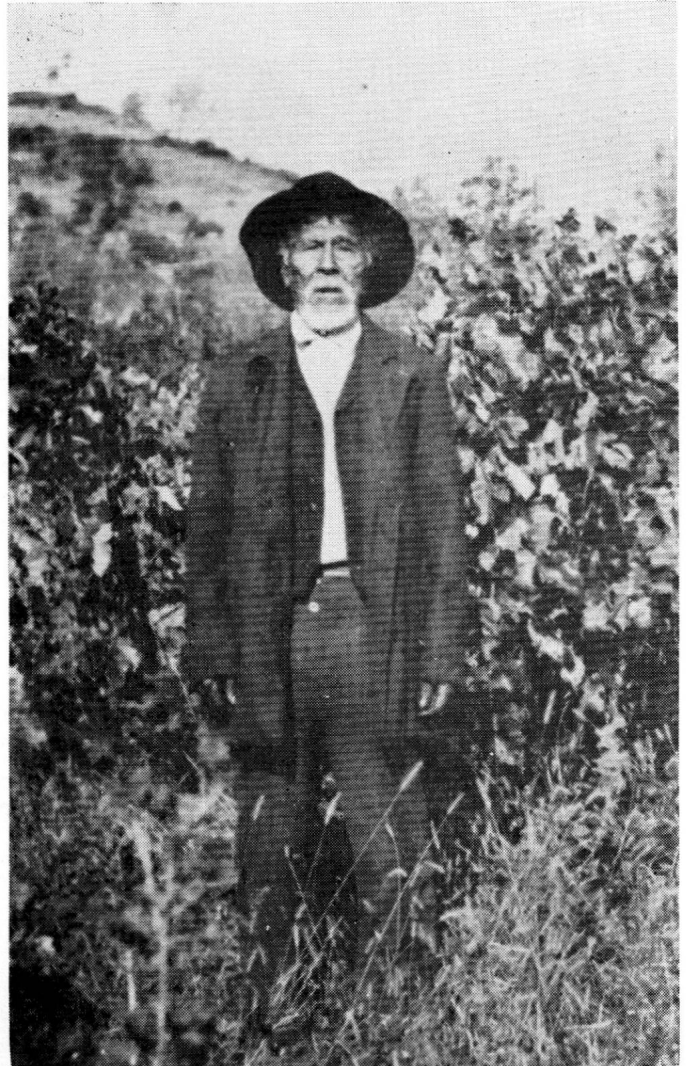
THE MATTESON & GARLAND LIVERY STABLE AT MURPHYS — IN THE '80S



Calaveras

Miwoks

LEFT—PEDRO CONNER
BELOW—OLD MANUELLA
OF MOKELUMNE HILL



INDIAN WALKER OF DOUGLAS FLAT



INDIAN ROUNDHOUSES

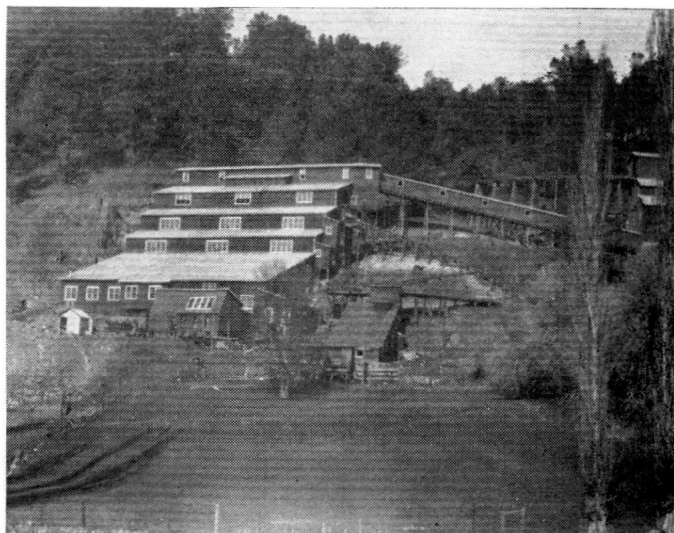
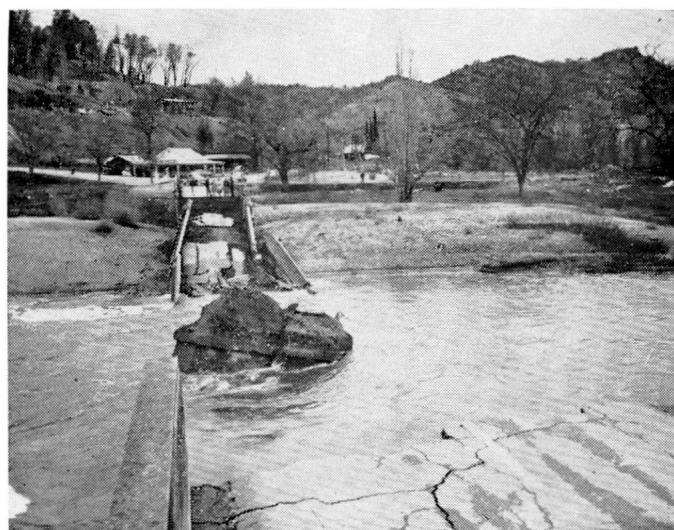


Stanislaus River Country

ABOVE—THE LAST TRIP OF
PARROTT'S FERRY, 1903

LOWER RIGHT—WOOD'S (ROBINSON'S)
FERRY AT MELONES

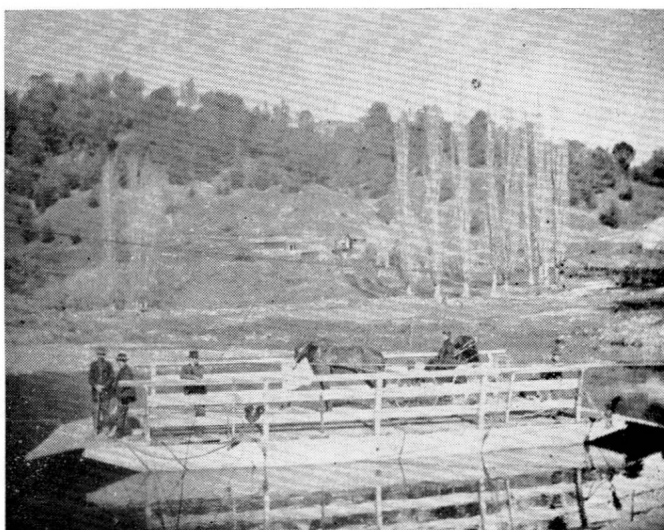
BELOW—THE MELONES BRIDGE AFTER
COLLAPSING ON JANUARY 25, 1952



CARSON HILL—MELONES STAMP MILL, 1919



THE STEVENOT FAMILY AT THEIR
CARSON HILL HOME, 1888





Upper Mokelumne Country

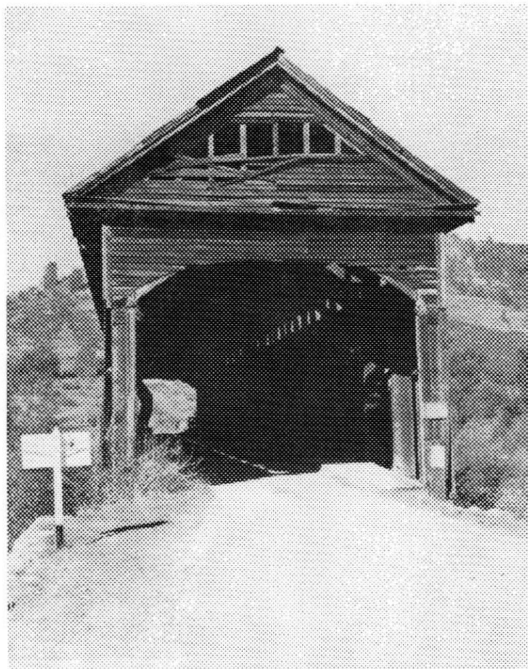
ABOVE—OLD FERNANDO AND FERRARO
BUILDING AT WEST POINT

UPPER LEFT—STREET VIEW AT
WEST POINT, 1892

LEFT—EDWIN TAYLOR'S STORE
AT RAIL ROAD FLAT



THE T. J. MATTESON FAMILY AT MURPHYS

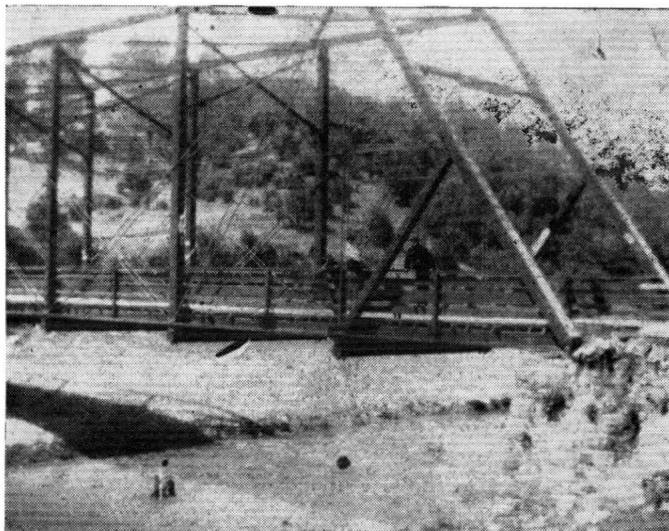
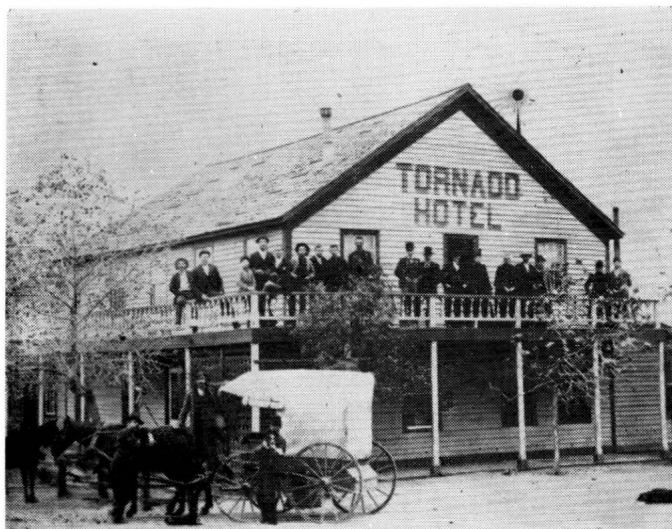


Here and There

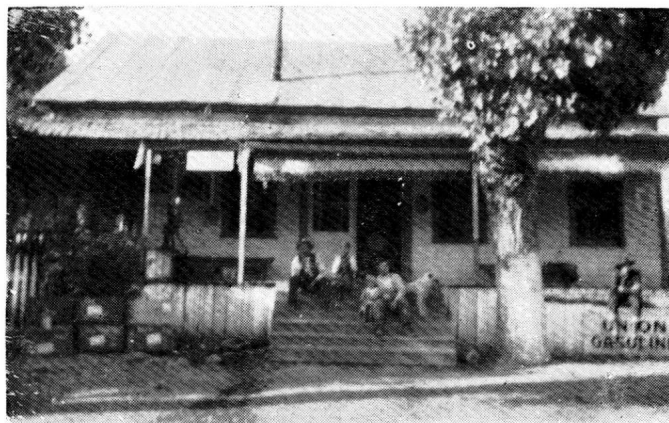
ABOVE—COVERED BRIDGE AT
O'BYRNES FERRY

LOWER RIGHT—IN 1911 THE MIDDLE BAR BRIDGE
COLLAPSED UNDER A LARGE HERD OF CATTLE

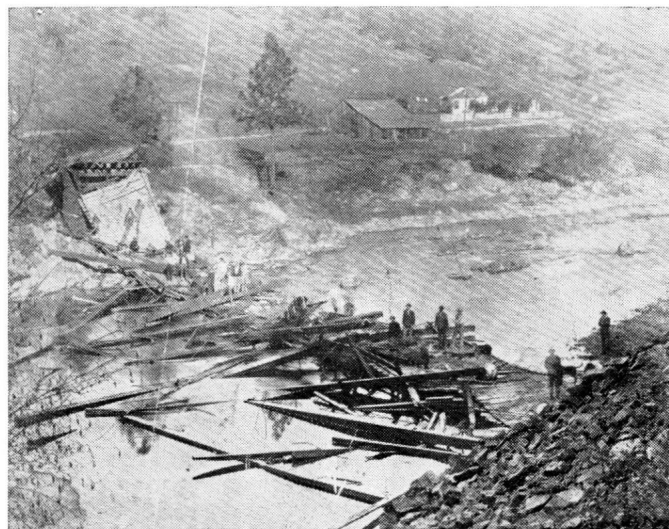
BELOW—THE TORNADO HOTEL AT MILTON

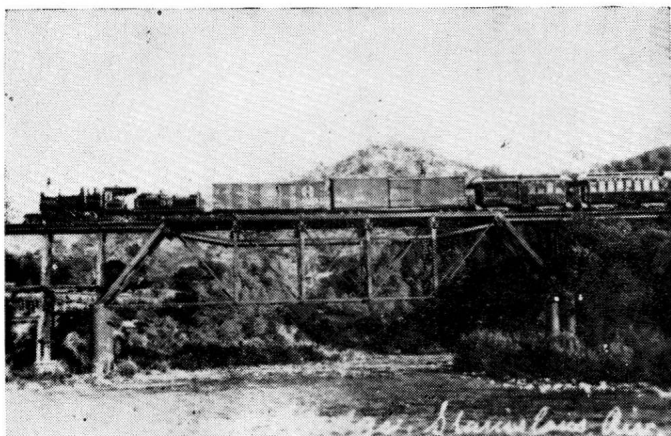


STEVENSON-McGURK BRIDGE ACROSS NORTH
BRANCH BELOW SAN ANDREAS ABOUT 1895



NORTH BRANCH STORE
AND WAY STATION





OLD NO. 30 CROSSING THE
STANISLAUS BRIDGE



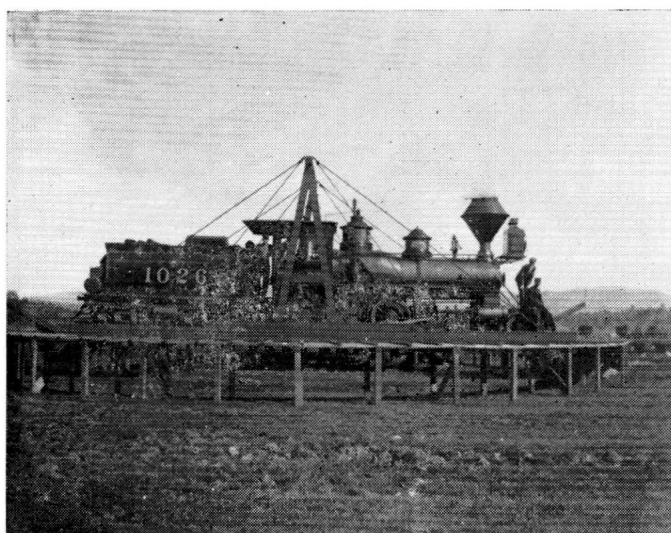
STAGES AT VALLEY SPRINGS, WAITING
FOR THE MAIL

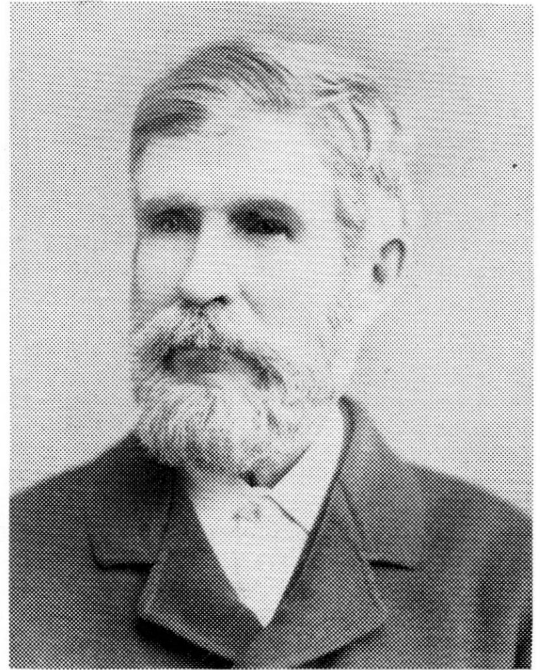
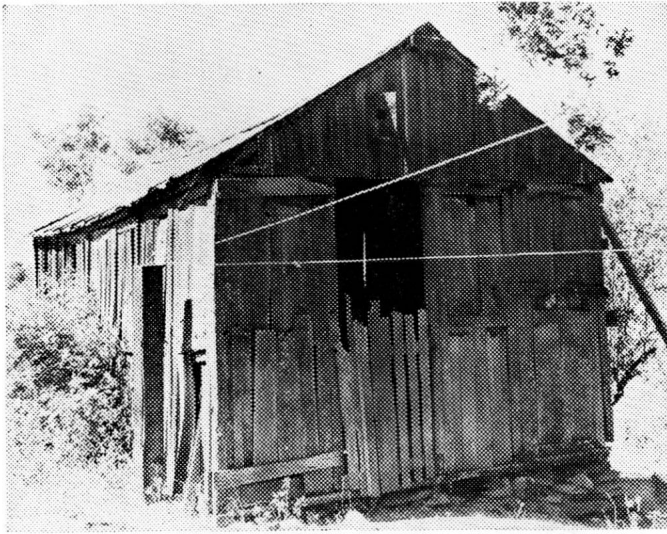
Stages and Trains

ABOVE—MAIL TIME AT CAMPO SECO

LOWER LEFT—NARROW GAUGE ENGINE ON
TURNTABLE AT VALLEY SPRINGS, ABOUT 1885

BELOW—MANUEL LOGGING TRAIN, 1894





Miscellany

UPPER LEFT—FIRST COUNTY COURT HOUSE, AT DOUBLE SPRINGS

UPPER RIGHT — ALEXANDER REID WHEAT OF DOUBLE SPRINGS

LEFT — LILLY CONNER, A MIWOK

RIGHT — GEORGE HEARST

LOWER LEFT — OLD BREWERY AT MOKELUMNE HILL

LOWER RIGHT — SHEEP RANCH MINE



